



ST. CLEER PARISH COUNCIL

Contributing to the planning process operated by Cornwall Council



The Councillors at St Cleer take their role as a **Consultee** on planning applications seriously and have offered and encouraged all Councillors to access training about Planning delivered by Cornwall Council. Several other organisations are also Consultees, especially as our Parish is an Area of Outstanding Natural Beauty and a World Heritage Site.

St Cleer is not responsible for planning decisions; this is undertaken by Cornwall itself, but Parish has been responsible for consulting with the residents of St Cleer and drawing up a Neighbourhood Development Plan (which is shortly to go out to further consultation). Information about this can be seen at <http://www.stdeerplan.org.uk/>. It will outline the view that Parish has on applications in the locality to protect our area and provide housing for future generations.

The Parish Council has 3 options in relation to all planning applications:

- Support
- Neutral
- Object

The decision is made by a simple vote of Councillors present and once made the Council as a whole takes responsibility for the decision which is final.

The Clerk notifies Cornwall of the decision and should it be an objection grounds for the objection are usually offered, such as 'not in keeping with the locality', 'not enough public amenity (space)'.

It makes the decision based on:

- The Neighbourhood Development Plan's outline
- Local residents' comments
- Site visits

Site visits are conducted on the 4th Saturday of the month; prior to the Parish meeting held on the 4th Wednesday of the Month. They start at 10.00 in the main village car park and every care is taken to contact applicants prior to the visit. Should this not be possible an individual will approach the homeowner and seek permission on the day.

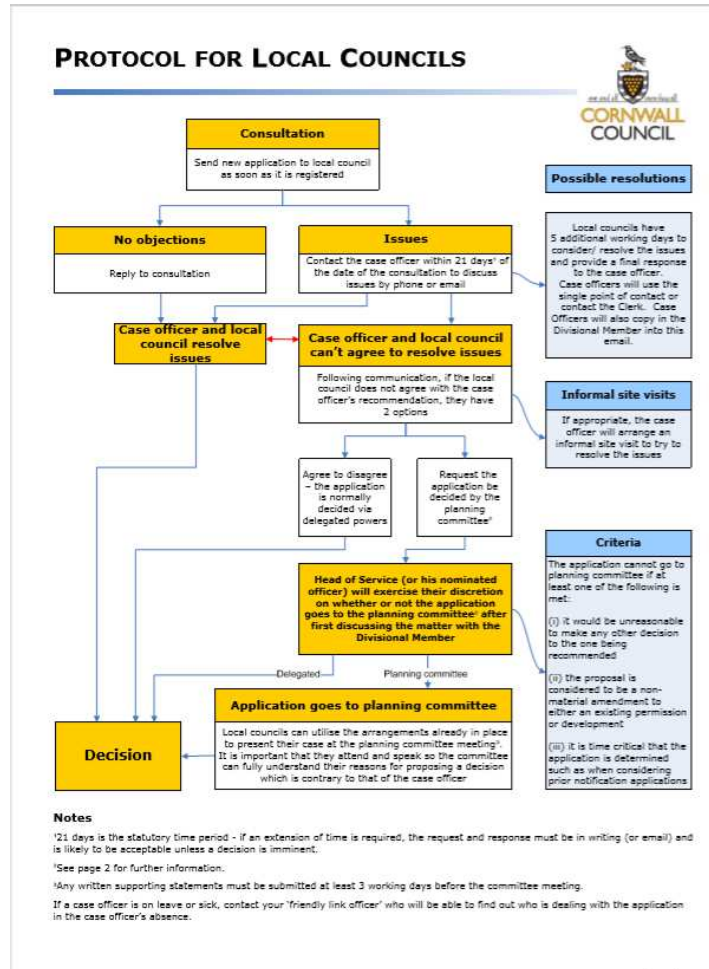
If the Councillors see the site, they can make a better and more consistent decision for the people of St Cleer, that they represent.



Further information on Planning follows.

Planning Protocol

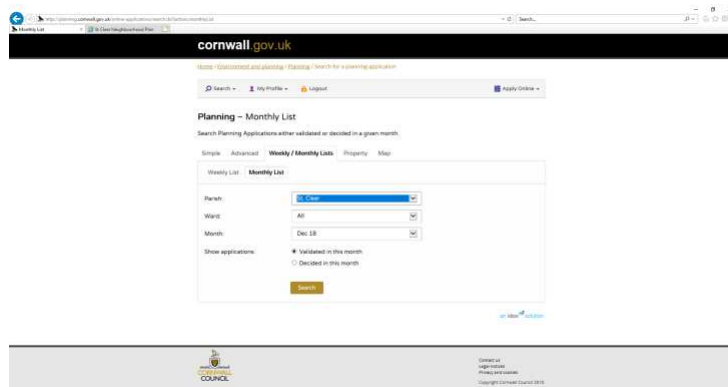
When Cornwall receives an application, the following Protocol falls into place



And it can be found at: <https://www.comwall.gov.uk/environment-and-planning/planning/local-councils/role-of-local-councils-in-planning/>

Planning Applications are public documents and anyone is able to comment on any application made; Cornwall's planning portal is on their website; to comment you have to register, but it is a simple process.

Parish looks at the Monthly lists provided and has letters sent to them from the relevant planning officers – you too can look to see what is happening across Cornwall; there are many applications per month so make sure you select 'St Cleer' rather than 'ALL'.



<http://planning.comwall.gov.uk/online-applications/search.do?action=monthlyList>

If you have a view on an application, make it. Your views are valid and will be seen by the applicant and those making the decisions about the plan